

**2013**  
**Rocky Mountain West**  
**Pavement Preservation Partnership**  
**Washington State Report**



**David Luhr**  
**Pavement Management Engineer**  
**Luhrd@wsdot.wa.gov**

# WA Basic Demographics



- State Highway System Description
  - 7,000 Total Centerline Miles
  - 18,500 Total Paved Lane-Miles (both asphalt and concrete)
- Number of State Transportation Employees: 6,500
- Total State Transportation Budget (2011-13 Biennium): \$9.9 billion
- Total Pavement Preservation & Rehabilitation Budget: \$ 268 million
- Major Pavement Preservation Treatments
  - 2" overlay / mill & fill
  - Chip seal
  - Crack sealing & asphalt patching
  - Concrete grinding

# WA SWOT Presentation



## Strengths

- Pavement Management System
- Quality Aggregates
- Research & Development
- Good Relations with Industry
- Performance Monitoring

# Economic Performance Measures

- Historical Cost of Pavement Service
  - EUAC (\$ / lane-mile year spent)
- Expected Cost of Future Pavement Rehab
  - LCCA (\$ / lane-mile year gained)
- ESAL Efficiency
  - Divide EUAC by average ESALs per lane per year
  - \$ / ESAL

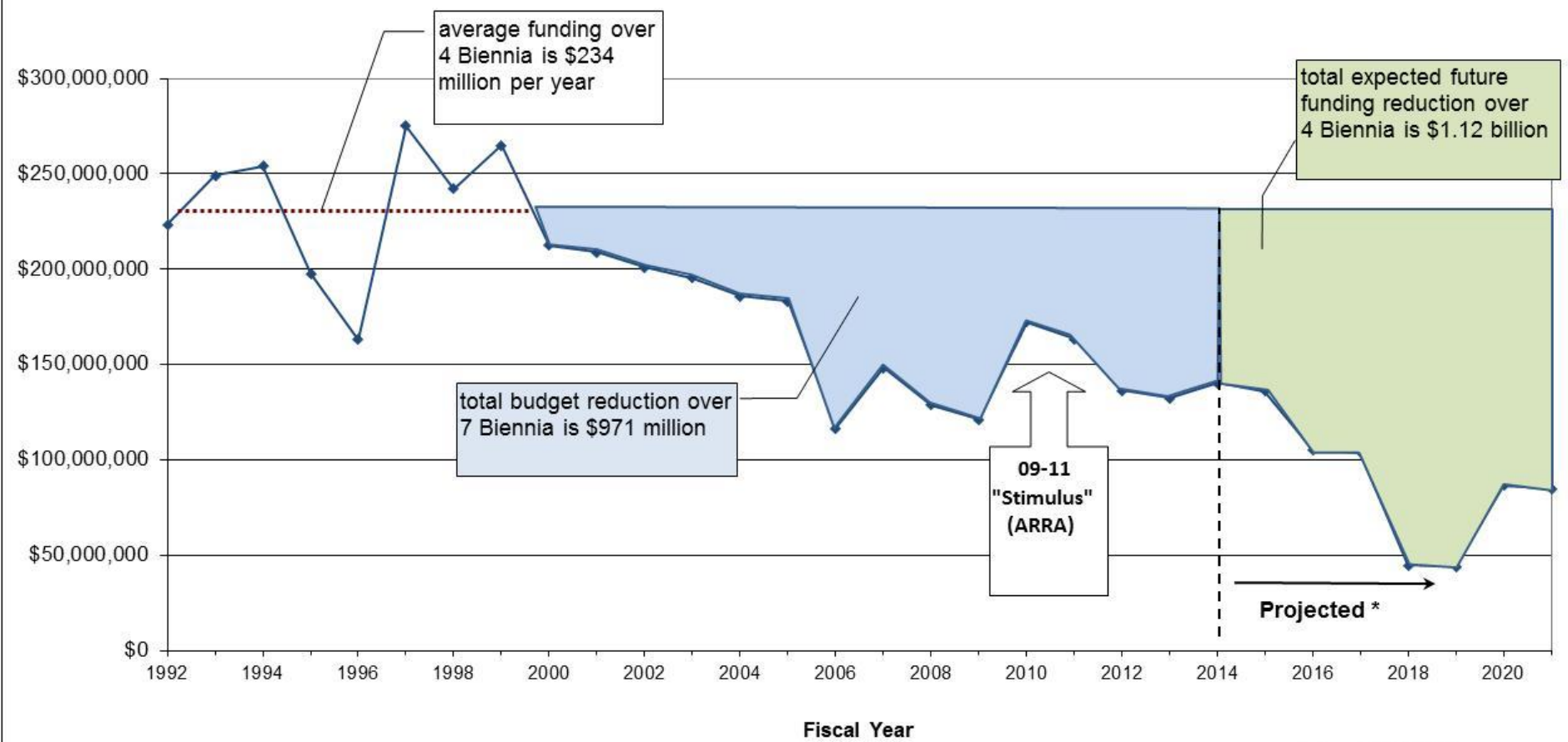
# WA SWOT Presentation



## Weaknesses

- Public / Legislature Relations
- Business Process (new implementation)
- Program Implementation (funding at ½ need)

### 30-year Roadway Preservation Annual Funding (Constant 2012 Dollars)



\* As of 12/2012



# WA SWOT Presentation



## Opportunities

- Technology: (e.g. Pave-IR)
- Business & Industry Support
- Coordination of Capital & Maintenance Programs
- Preservation Treatment Effectiveness
- Network Performance Measures

# Monitoring of Treatment Segments





# WA SWOT Presentation

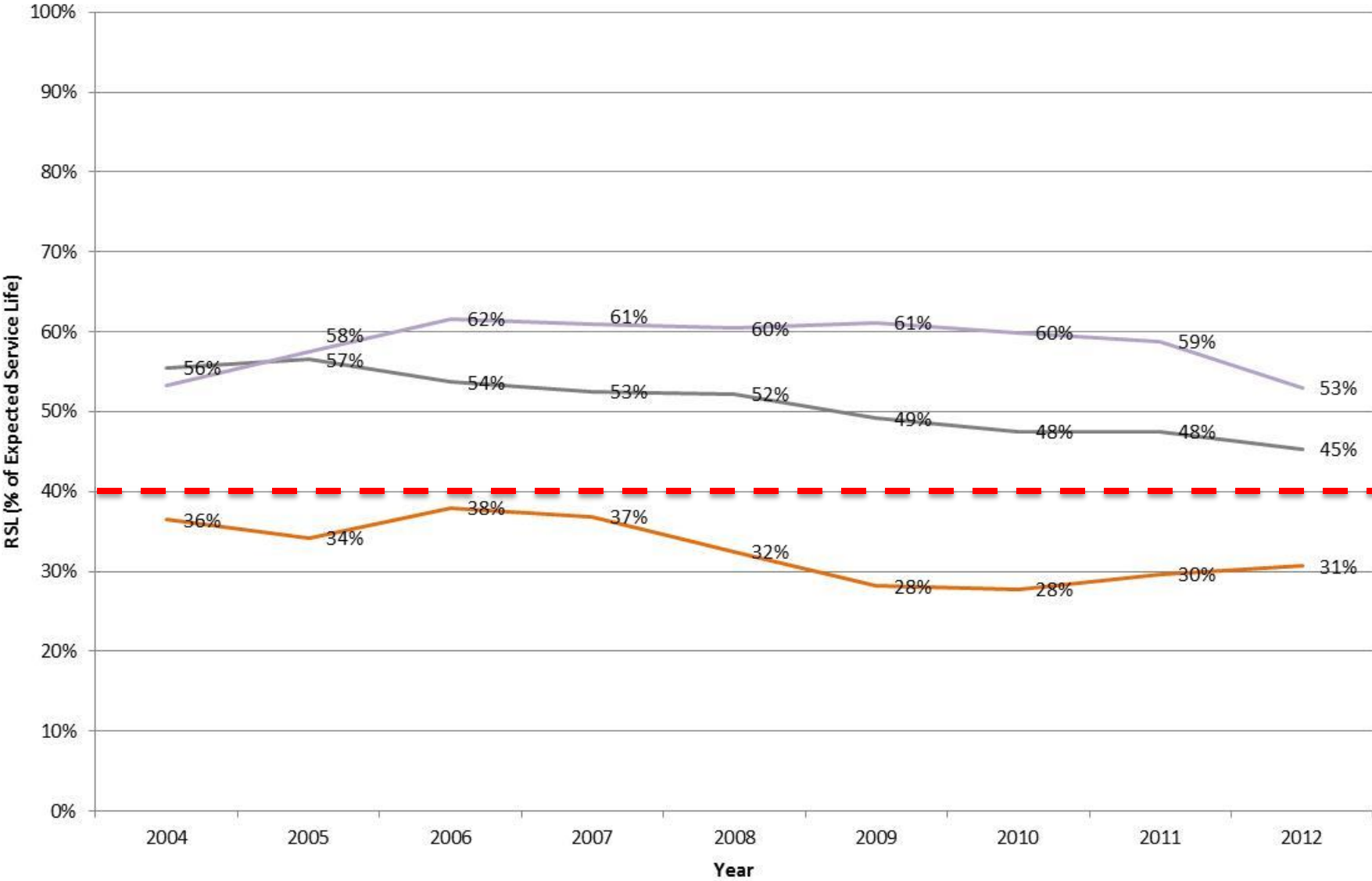


## Opportunities

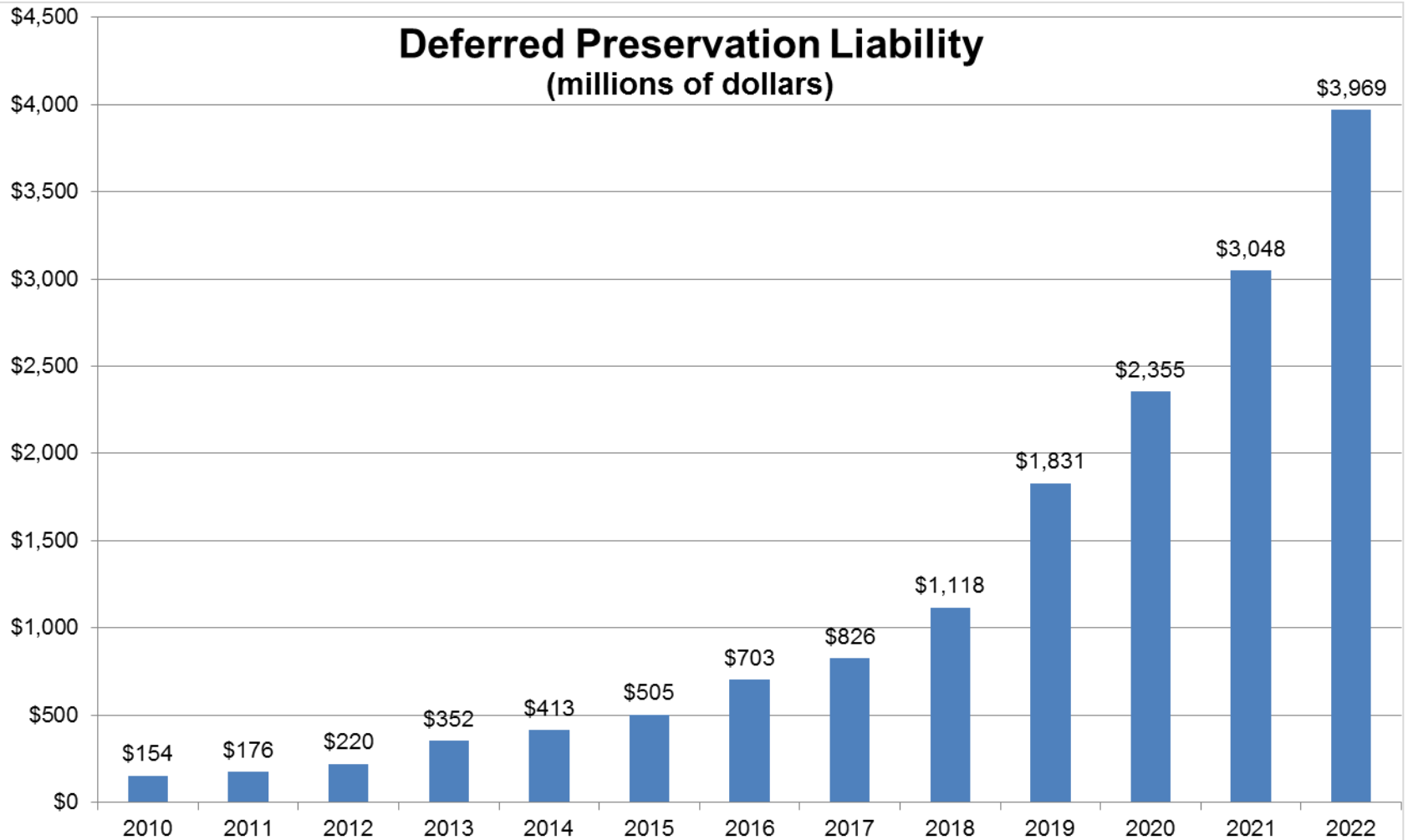
- Technology: (e.g. Pave-IR)
- Business & Industry Support
- Coordination of Capital & Maintenance Programs
- Preservation Treatment Effectiveness
- Network Performance Measures

# Statewide RSL (Lane Mile Years)

— % ACP RSL    — % BST RSL    — % PCCP RSL



## Deferred Preservation Liability (millions of dollars)



# WA SWOT Presentation



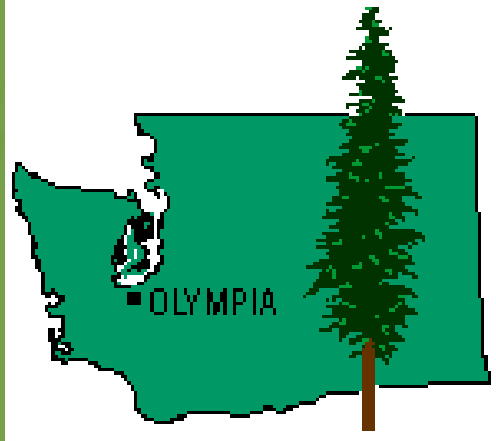
## Threats

- Budget (heading from 1/2 need to 1/3 need)
- Performance Monitoring (40% cut in last 2 years)
- MAP-21 Requirements for Local Govt.??





# Washington



Evergreen State



Orca: State Marine Mammal



# Washington (cont.)



Walla Walla Sweet  
Onion: State Vegetable



Bluebunch Wheatgrass:  
State Grass

